



## **The 56<sup>th</sup> Presidential Inauguration Operations/ITS limited Availability**

ITS Virginia  
April 29 – 30, 2009  
Richmond, Virginia  
Homer Coffman

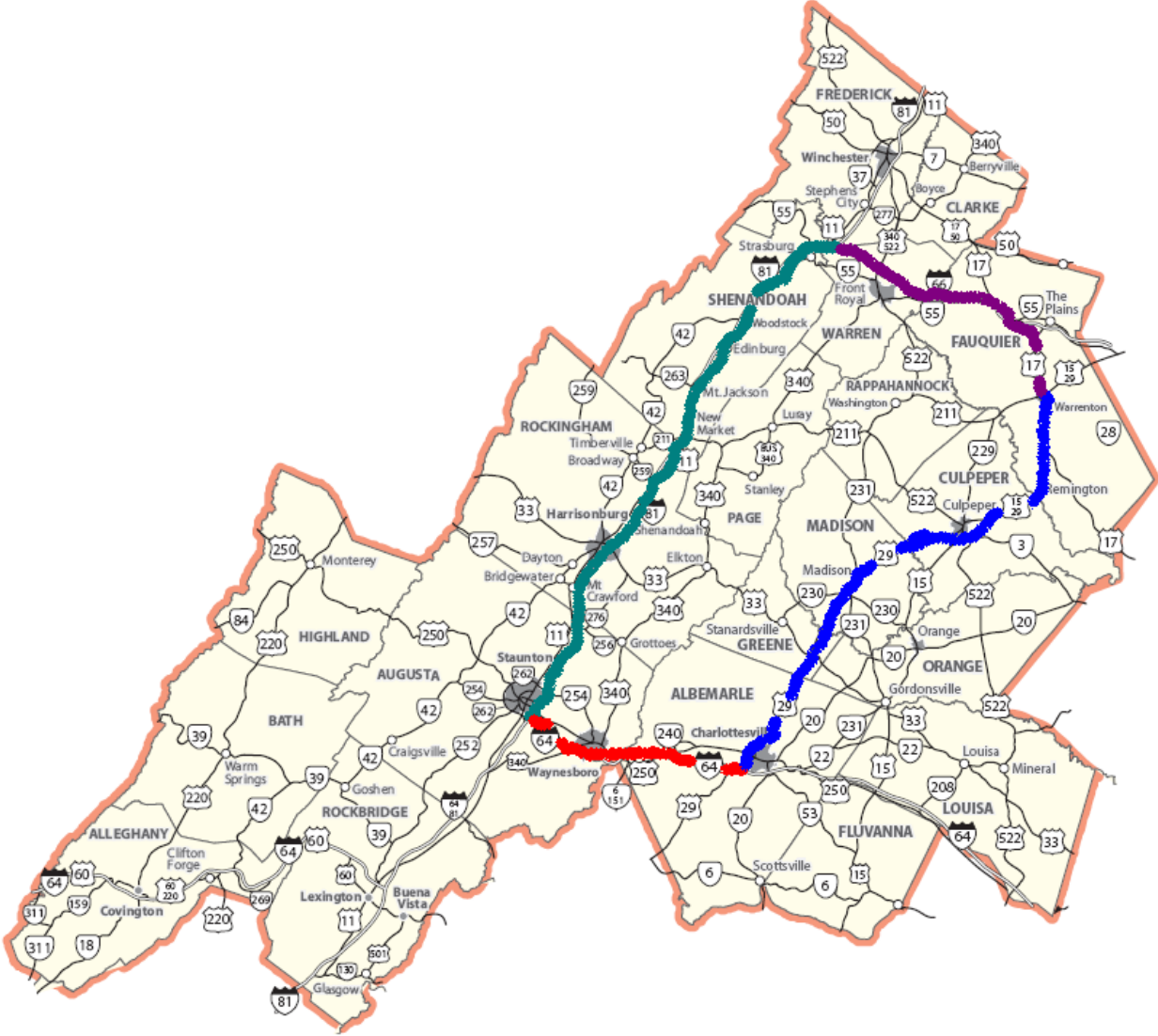
# The Situation

- **Need a Traffic Management Plan**
- **Many different scenarios being presented prior to event**
- **Multi-day event: Sunday January 18 to Wednesday January 21**
- **10,000 Charter Buses anticipated**
- **Need to support NRO/PSTOC as lead center.**
- **Multiple system entries to evaluate and plan for (29/66/81/64/28)**
- **Unknown number of vehicles, and from where**
- **Limited ITS on both I-66 and Route 29.**
- **Rapid Deployment non existent on most systems**
- **Don't fail**

## Unpredictable

- **Weather – January in Shenandoah Valley**

# Coverage Area



# Challenges

- **Local Stakeholders**
- **Establishing Decision Points**
- **Monitoring Roadway Systems**
- **Verification of incident/events**
- **Rapid Deployment of Assets**
- **Media Reporting (Get the message out)**
- **Resources**

## Develop the Plan (Two Weeks)

### What is available?

- **CCTV (limited on I-66 and Route 29)**
- **CMS (Limited on I-66 and Route 29)**
- **CAD (VSP and Charlottesville)**
- **SSP (Limited Coverage)**
- **Incident Management Team**
- **Transportation Operations Center**
- **Resources (External/Internal) to support staffing needs**
- **Communications (phone, email, web, video)**

## Where did we start?

- **Incident Manager – Develop plan to provide SSP coverage, Rapid Deployment to assist law enforcement. Identify critical points for detours, etc. Work with local stakeholders**
- **Team – Identify Sites for deployment of ITS Assets**
- **Maintenance Staff – Deploy the ITS assets to key locations on systems**
- **Transportation Operations Center Management – Develop staffing plan based on estimates and support of SSP routes. Develop messages for posting in advance and during event.**
- **Maintenance – Provide resource (manpower) and assist with procurement of consumables for SSP routes.**
- **Public Affairs – Press Releases – Advance and During Event**

## A Team Effort

- **Maintenance – Support of event with technician strategically placed for signals (arterial system – detours)**
- **Maintenance – Support of event with contractor to provide technician strategically placed to support ITS devices (functioning)**
- **Incident Manager – Training of internal resources identified to assist with SSP routes.**
- **Duty Officer and District Media**
- **Residencies/Districts – Support fueling locations, response teams**



# PCMS SIGNS & CCTV SUPPORTING INAUGURATION

## Decision Points

### PCMS

- I-81 SB MM 307 prior to 66 Interchange.
- I-66 EB @ MM 3 prior to Exit 6 WB @ MM 8.
- I-66 EB @ MM 25 (before US 17 split).
- Rte. 29 SB 2 Miles prior to Culpeper (before Brandy Station).
- Rte. 29 NB Prior to Warrenton (near Lee Ridge Rd).
- Rte. 29 NB Prior to Route 33.
- Route 7 EB 2 miles prior to Clarke County Line (before Shenandoah River bridge).
- Route 17 EB prior to Clarke County Line (before Rte 601).
- Route 50 EB prior to Middleburg.

### CCTV

- I-66 Exit 28
- Rte. 29 & Rte. 17

# Traffic Operations Center & Conference Room



# SYSTEM OPERATIONS

## Monitor System/Detect Problem

- VSP CAD/Albemarle CAD
- Cameras
- Safety Service Patrol
- RWIS
- Afton Mountain Fog
- TrafficLand
- Weather Services
- TAMS Contractors

# SYSTEM OPERATIONS

## Verify Incident/Conditions

- Law Enforcement on-scene
- VDOT or Contractor on-scene
- Cameras
- Safety Service Patrol
- VDOT Residency / Area personnel
- Video Link to PSTOC

# SYSTEM OPERATIONS

## Respond to Incident/Problem

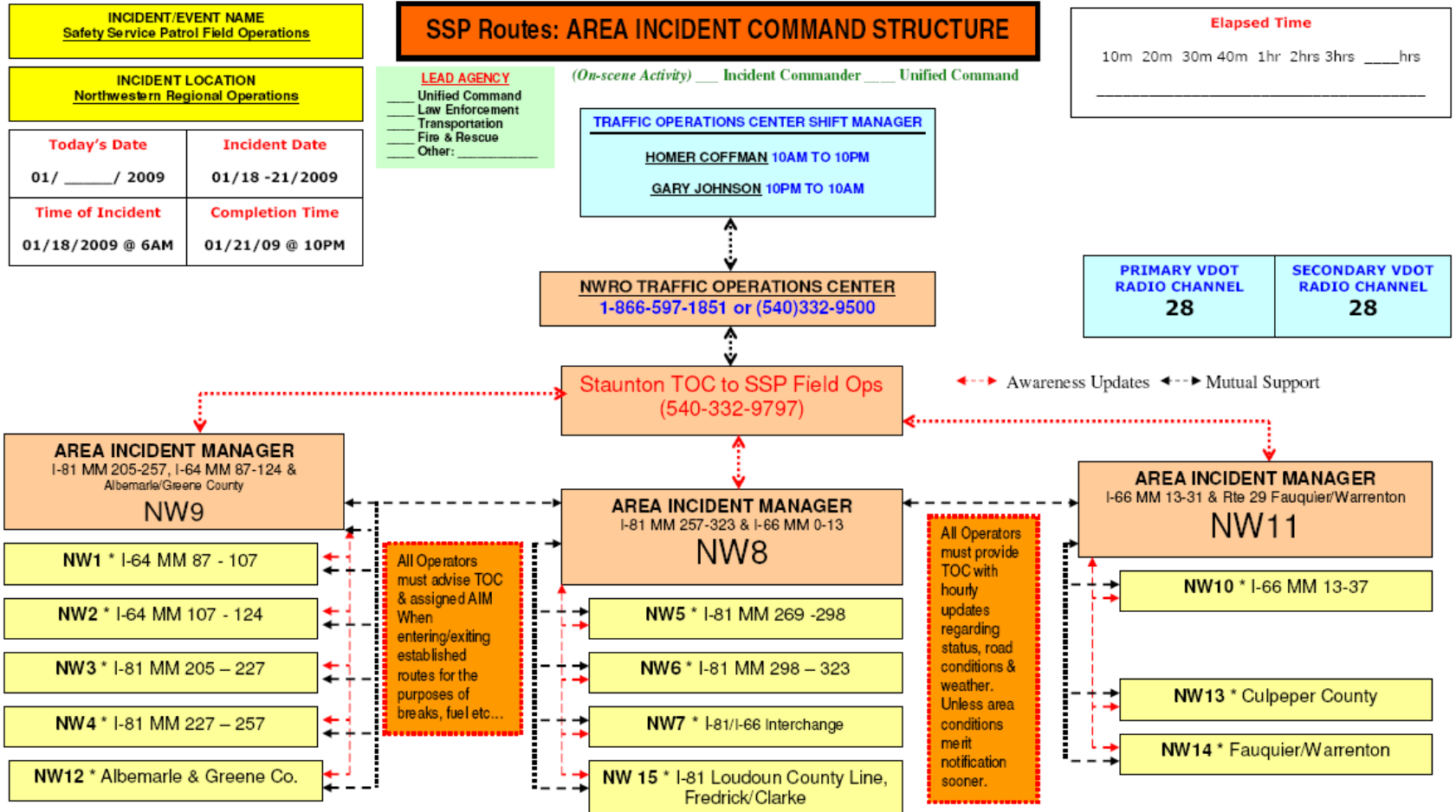
- Dispatch Residency/TAMS Contractor
- Safety Service Patrol
- VA Traffic
- Signal Timing Techs
- ITS Techs

# SYSTEM OPERATIONS

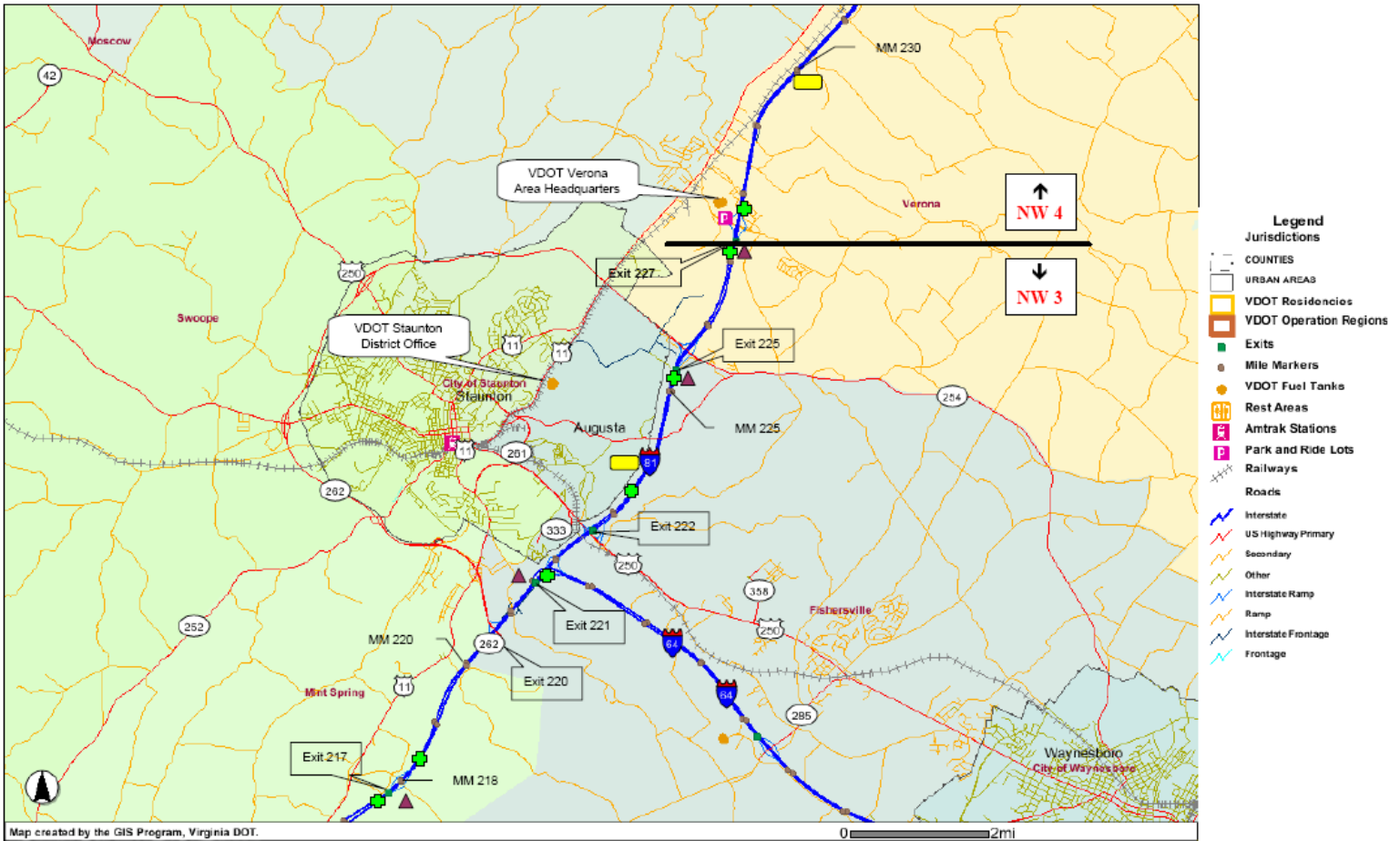
## Inform Motorists

- **CMS/PCMS Advance**
- **Media (Advance/During)**
- **Pre-Trip:**  
Internet (511-Web and VDOT)
- **En-route:**  
CMS and 511-Phone
- **NRO PSTOC**

# Command Structure



# Details of the route



**NW3 – NW4 I-81 - MAP 2 (MM 218 – 231)**

▲ Camera    ■ Message Sign    ■ Cross Over



# Outcome – 14 SSP Routes

## NORTHWESTERN REGION

### INTERSTATE I-64

NW1 MMB7-107  
NW2 MM107-124

### INTERSTATE 81

NW3 MM205-227  
NW4 MM227-257  
NW5 MM269-298  
NW6 MM298-323

### ROUTE 7

NW15 NOT SHOWN ON MAP

### I-81/I-66 INTERCHANGE

NW7 I-81 MM298 /  
I-66 MM0-13 /  
I-81 MM307 /  
I-81 MM298  
(CONTINUAL LOOP)

### INTERSTATE 66

NW10 MM13-40

### ROUTE 29

NW12 ALBEMARLE & GREENE COUNTY  
NW13 CULPEPER COUNTY  
NW14 FAUQUIER COUNTY



Event Totals	Route	URS	VDOT	TOTALS
	I-81	31	67	98
	I-64	0	31	31
	I-66	36	1	37
	Route 7	0	2	2
	Route 17	2	0	2
	Route 29	0	11	11
	<b>EVENT GRAND TOTALS</b>	<b>69</b>	<b>112</b>	<b>181</b>

# Outcome

- Predictions were much higher than experienced
- Did not experience any congestion
- Assisted in 181 events consisting of assists to law enforcement, incidents, disabled motorists
- **Weather – Surprise event – Morning of Inauguration**  
Shenandoah County – Snow/Ice  
Icing occurred on Interstate 81 at/near interchange with I-66 – major system to event.
- **Rapid Deployment**
  - Multiple Safety Service Patrol Units on scene within minutes to assist
  - TAMS Contractor was strategically placed near the event, rapid response
- **ITS Devices**
  - Supported timely verification
  - Supported timely notification

# Lessons Learned

- **Planning is the answer for major events**
- **Use what you have and invent the rest for systems operations**
- **Keep the plan simple and realistic for implementation**
- **Surprises abound (snow event not predicted)**
- **Communicate the Plan**
- **Delegate and Let people perform their duties you assign**
- **Do NOT be tempted to deviate from your Plan**
- **Take the time for post-event debriefing**
- **Thank your folks**

# Questions

